

**XIB 鑫天碧®**

**北京鑫天碧农业设施工程技术有限公司**

Beijing XinTianBi Agricultural Facilities Engineering Technology Co.,Ltd

Add: Rm9051,Jinchao Building,No.5 Nongzhanguan South road,  
Chaoyang District,Beijing,China.

Tel: +86 010-65841835 / 65062602 / 65030685

Fax: +86 010-65948356

Post code: 100125

web: [www.xtbgreenhouse.com](http://www.xtbgreenhouse.com) [www.xtb.com.cn](http://www.xtb.com.cn)

**融汇领先科技·服务中国温室**

Your professional partner for all greenhouse materials





# Introduction

## XTB

Beijing XinTianBi was founded at Beijing in 2000. Since then, we focus on developing, manufacturing, and supplying greenhouses and greenhouse materials to clients around the world.

Our main business is

>> Manufacturing and supplying greenhouses;

>> Manufacturing and distributing greenhouse subsystems and materials such as

1. Ventilation systems ( gear motor, rack&pinion, manual drives, and accessoires);
2. Screening systems ( gear motor, rack&pinion, cable system, and accessories);
3. Aluminium profiles for PC greenhouses and glass greenhouses.
4. Steel structures;
5. Cooling system;
6. Irrigation system.

Our team, Involving horticultural experts, engineers, and technicians, has strong research and development capabilities, extensive engineering experience, and quick execution.

We are looking forward to the cooperation with you, not only selling products but also being your partner!

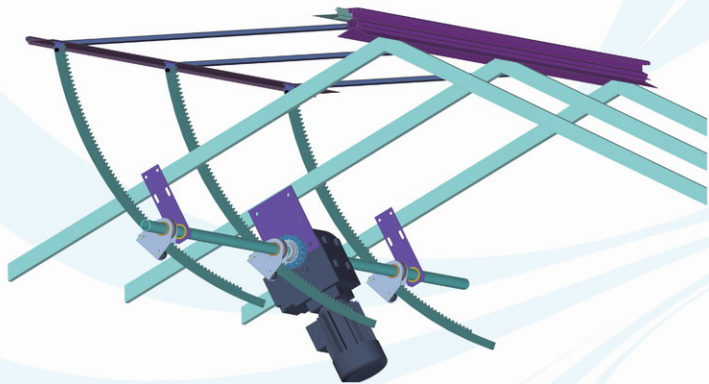
## Contents

Ventilation system	01-08
Screening system	09-22
Gear motor	23-38
Irrigation system, Ebb/flood irrigation system	39-49
Horticulture equipment	50-53
Mixing valves	54-56
Hydroponics cultivation	57-60
Greenhouse profiles & materials	61-66
Film greenhouse materials	67-69
Cooling pad system	70-74
Light system	75-78
Greenhouse control system	79-80



Ventilation system

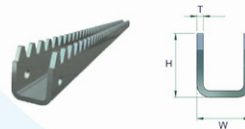




Ventilation pin  
A Type(copper sleeve) ,1"



Ventilation pin  
Enhanced , 1"



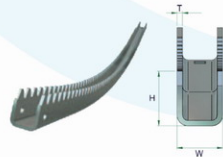
Ventilation rack (straight)

L=1050 1250 1450 1650 1950 mm

T=2.0 2.5 3.0mm

H=30mm

W=25mm



Ventilation rack ( curved ,inside teeth )

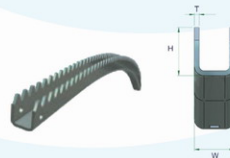
L=1050 1250 1450 1650 1950 mm

T=2.5 mm

H=30mm

W=25mm

R=1000



Ventilation rack ( curved ,outside teeth )

L=1050 1250 1450 1650 1950 mm

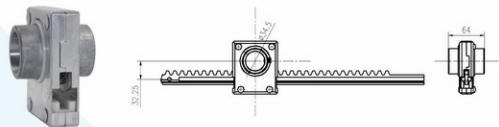
T=2.5 mm

H=30mm

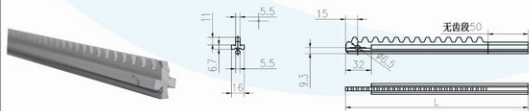
W=25mm

R=1000



**XIB 鑫天碧® Continuous ventilation system**


Aluminum ventilation pinion  
A Type, 1"



Aluminum ventilation rack  
L=1050 1250 1650 1950 mm



Window bracket  
Cast aluminum



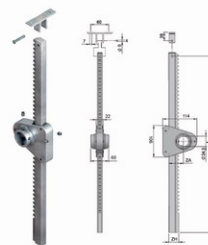
Bearing plate  
1", 5/4"



Motor mounting plate



T type motor mounting plate of ventilation

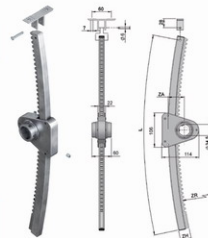
**德国LOCK连续开窗齿轮齿条(直型)**
**LOCK continuous ventilation rack and pinion(straight)**


齿轮齿条形式

61405.0302

61405.0502

型号	名称	F(N)	L(mm)	ZA(mm)	ZH(mm)	M(kg)	齿轮齿条形式
AZD03.0208	铝齿轮齿条	300	800	42	26	0.7	61405.0302
AZD03.0210	铝齿轮齿条	300	1000	42	26	0.7	61405.0302
AZD03.0212	铝齿轮齿条	300	1205	42	26	0.8	61405.0302
AZD05.0208	铝齿轮齿条	700	800	52	33	0.8	61405.0502
AZD05.0210	铝齿轮齿条	700	1005	52	33	0.9	61405.0502
AZD05.0212	铝齿轮齿条	700	1205	52	33	1.0	61405.0502
AZD05.0214	铝齿轮齿条	700	1400	52	33	1.2	61405.0502
AZD05.0216	铝齿轮齿条	700	1600	52	33	1.3	61405.0502

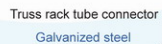
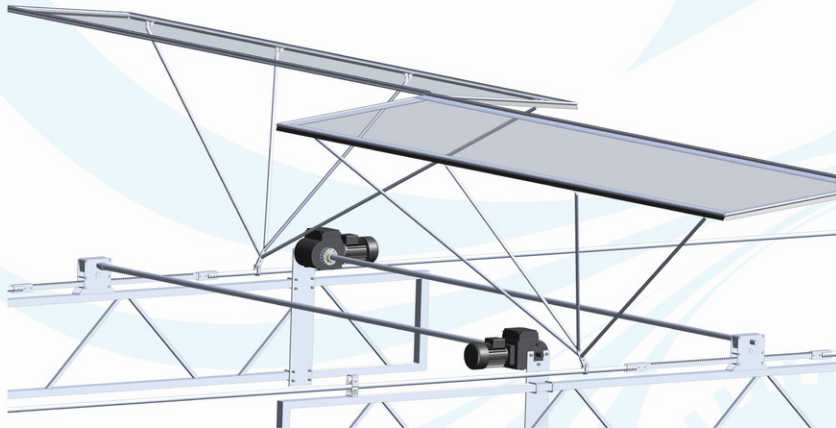
**德国LOCK连续开窗齿轮齿条(弧型)**
**LOCK continuous ventilation rack and pinion(Curved)**


齿轮齿条形式

61405.0312

61405.0512

型号	名称	F(N)	L(mm)	ZA(mm)	ZH(mm)	ZR(mm)	M(kg)	齿轮齿条形式
AZD03.1208	铝齿轮齿条	300	805	42	26	700	0.7	61405.0312
AZD03.1210	铝齿轮齿条	300	1005	42	26	700	0.7	61405.0312
AZD03.1212	铝齿轮齿条	300	1205	42	26	700	0.8	61405.0312
AZD05.1208	铝齿轮齿条	600	805	52	33	1500	0.8	61405.0502
AZD05.1210	铝齿轮齿条	600	1010	52	33	1500	0.9	61405.0502
AZD05.1212	铝齿轮齿条	600	1210	52	33	1500	1.0	61405.0502





**XIB 鑫天碧®** Truss mounting ventilation system


Aluminum push rods clamp  
Ø32



Window bracket  
Connect window frame and push rods



Glass window bracket  
Connect window frame and push rods



Shaft clip  
Stainless steel

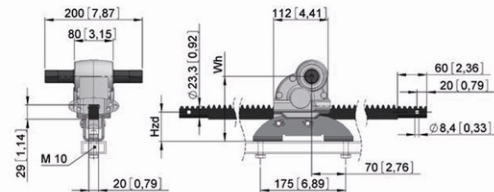


Welding joint  
1", 5/4"



Push rods  
Customized Ø19mm

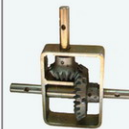
德国LOCK 桁架开窗齿轮齿条 LOCK truss rack and pinion



型号	名称	F(N)	L(mm)	Hzd(mm)	Wh(mm)	ZR(mm)	T1(Nm)	m(kg)
LZG20.2005	桁架开窗齿轮	5500		60	133	700	44	5.0
LZZ20.5012	桁架开窗齿条		1250			700		4.8



手动减速器 Manual gear box  
速比 : 1.8:1 扭矩 : 50Nm



扭矩传动箱 Torque transmission box  
速比 : 1.8:1 扭矩 : 50Nm



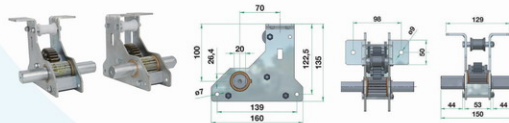
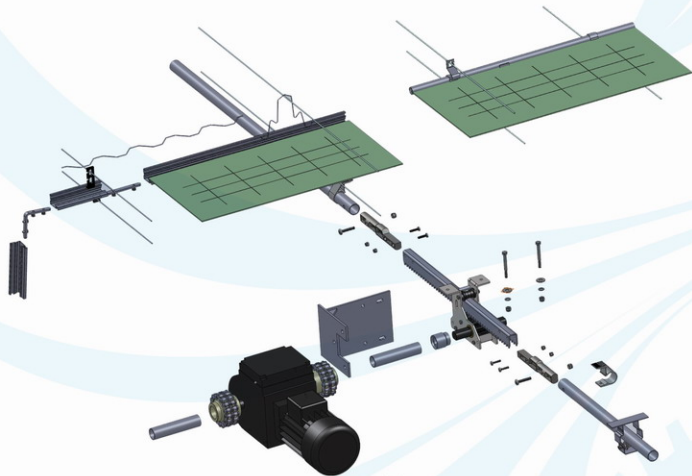
Screening system





# XIB鑫天碧® Screening system

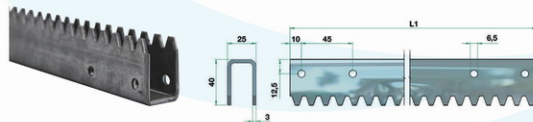
## A Type rack and pinion screening system



Screening pinion A type

Stroke: 79mm

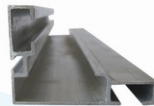
Speed ratio: 1.8:1



Screening rack

L1= 2965, 3965 4965 mm

T= 2.75mm 3mm



Aluminum leading profile

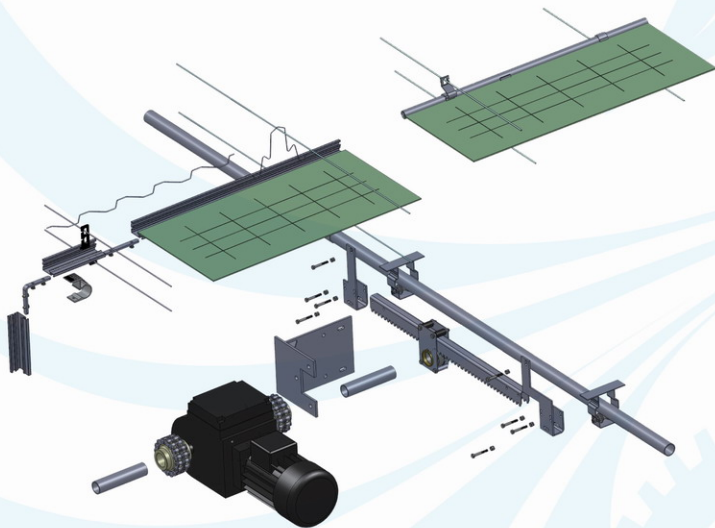


Rack tube connector

Cast aluminum Ø32mm Ø27mm

# XIB鑫天碧® Screening system

## B Type rack and pinion screening system



Rack tube connector  
Cast steel Ø32mm Ø27mm



Rack tube connector, B Type  
Cast steel Ø32mm Ø27mm



Push pull support  
Aluminium frame, Ø32mm Ø27mm



Push pull support  
Galvanized Ø27mm Ø32mm



Aluminum table clamp  
Ø27mm Ø32mm

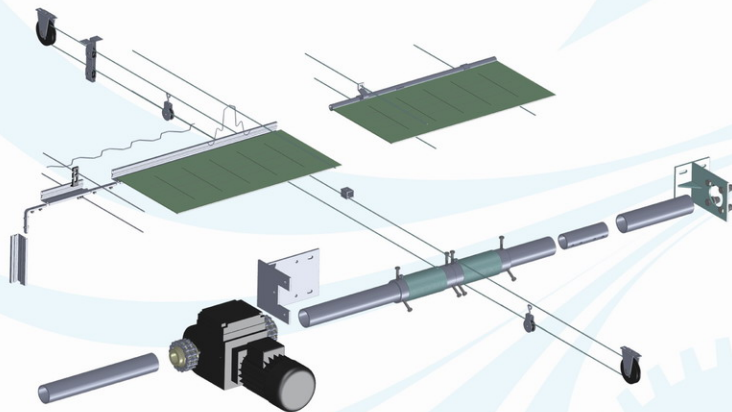


Screen pinion B type  
Stroke: 143mm  
Speed ratio: 1:1



# XIB鑫天碧® Screening system

Cable screening system



I type connector



L type connector



Aluminum leading tube  
Ø19mm



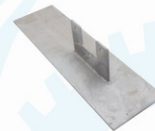
Al-tube connector  
Ø19mm



Al-tube connector  
Plastic Ø17mm



Motor mounting plate of screening system



Motor mounting plate of truss screening system

**XIB 鑫天碧®** Screening system



Small wire guide clip  
Plastic



Big wire guide clip  
Plastic



Winch drum  
1" 2" L= 160 200 250 mm



Aluminum clamp  
26mm



Small tube wire guide clip  
Plastic Ø19mm



Big tube wire guide clip  
Plastic Ø19mm



Winch drum(plastic)  
1" L= 200 mm



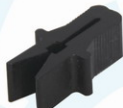
Slip clamp  
Ø19 mm



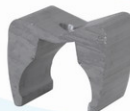
Screen hook



Screen hook



Screen clip



Pull tube clamp  
Ø19 mm



Weight  
Ø45mm T=2mm



XIB 鑫天碧® Screening system



Bearing plate  
2"



Wire straightener  
40\*30\*30 90\*30\*25 125\*45\*30 mm



Pulley  
Ø100 mm



T Bolt  
M6×40 M6×80



Screen wire  
transparent 2400m/roll



Coating wire  
Ø2.8, 2500m/roll



Welding joint  
1", 5/4"



Outside shading screen  
Anti-UV  
shading rate : 75% 80% 85%



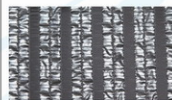
Screen wire  
Black 2000m/roll



Shaft clip  
Stainless steel

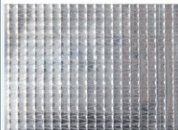


Aluminum outside shading screen  
Anti-UV  
shading rate : 55% 65% 75%



Aluminum internal shading screen  
shading rate : 55% 65% 75%

# XIB鑫天碧® Screening system



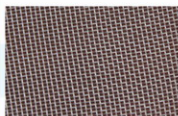
Aluminum light resistant shading screen  
shading rate: 70 %



Film shading screen  
shading rate: 75%



Film light resistant shading screen  
shading rate: 90% 99%



Insect net  
Grid: 30 40 50

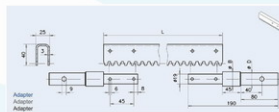
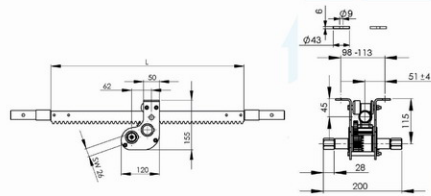


Energy screen  
shading rate: 15%  
Energy saving: 47%



Aluminum energy shading screen  
shading rate : 55% 65% 75%

## 德国LOCK拉幕齿轮齿条 LOCK Screen rack and pinion



型号	名称	F(N)	L(mm)	i(mm)	LF(mm)	m(kg)
SZG35.0502	拉幕齿轮	500		1.7:1		3.2
SZG35.0540	拉幕齿条		3965		4.0	11.1

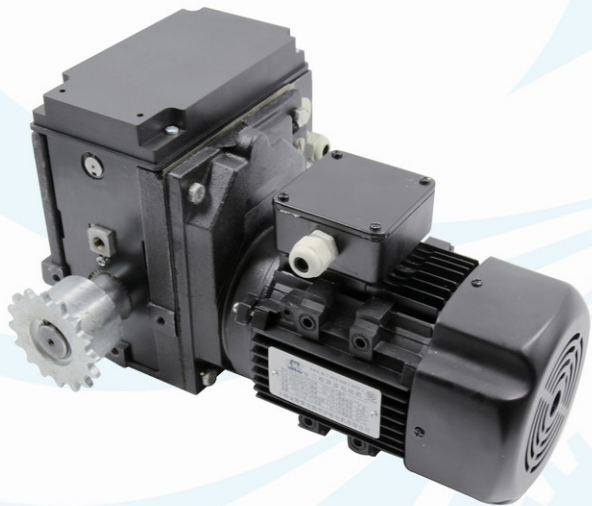


Gear motor







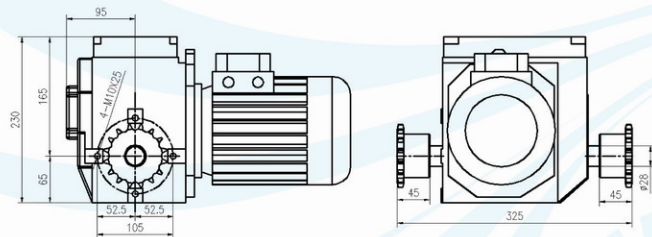


## TWJ Gear motor

## Gear motor advantage:

- 1.High quality and reliability;
- 2.High quality electric motor from a USA-China Joint manufacturer;
- 3.Build-in precise limit switch;
- 4.Compact and light weight;
- 5.Easy maintenance and low noise;
- 6.IP protection grade: IP55

## TWJ Gear motor mounting drawing



Type	Voltage(V)	Power(W)	Speed(rpm)	Torque (Nm)
TWJ403	380	370	3	400
TWJ405	380	550	5	400

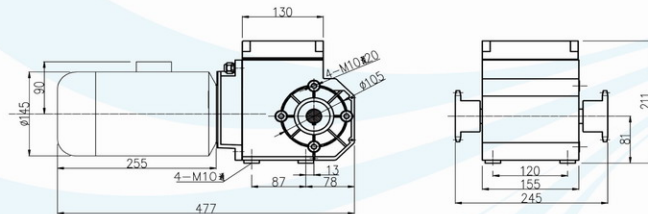


## BWJ Gear motor

## Gear motor advantage

1. High quality and reliability;
2. Built-in precise limit switch;
3. Compact and light weight;
4. Easy maintenance and low noise;
5. IP protection grade: IP55.

## BWJ Gear motor mounting drawing



Type	Voltage (V)	Power (W)	Speed (rpm)	Torque (Nm)
BWJ40-2.6	380	550	2.6	400
BWJ40-5.2	380	550	5.2	400
BWJ80-2.6	380	750	2.6	800
BWJ80-5.2	380	750	5.2	800

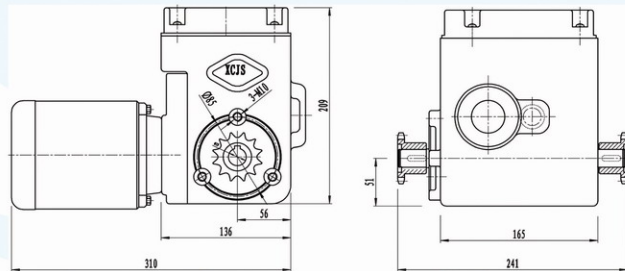




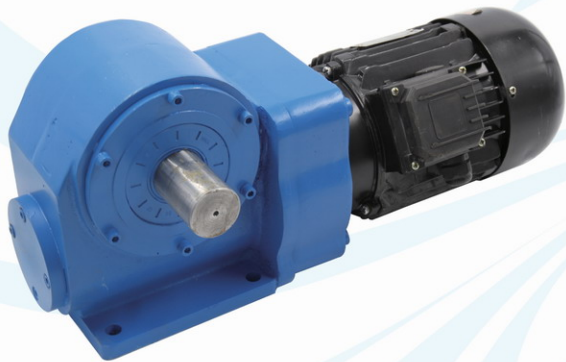
## CQW Gear motor

1. High quality and reliability;
2. Built-in precise limit switch;
3. Compact and light weight;
4. Easy maintenance and low noise;
5. IP protection grade: IP 55.

## CQW Gear motor mounting drawing



Type	Voltage(V)	Power(W)	Speed(rpm)	Torque(Nm)
CQW22-2.0	220	120	2.0	220
CQW34-2.0	340	180	2.0	340



## XTB Quilt roller

1. Simple structure, small size, light weight, easy maintenance, easy to use;
2. Low noise, high torque, reliable performance, long life;
3. Volume was range: 80-100 meters, width: 8 meters

Type	Voltage(V)	Power(W)	Speed(rpm)	Torque( Nm)
JWJ-0.75	380	750	3	1600Nm
JWJ-1.1	380	1100	5	2200Nm

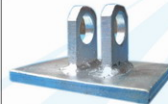
## Quilt roller accessories



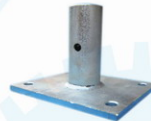
Flange



Pin



Hinge Joint



Mounting Plate





德国LOCK 管式电机



### 特点及应用

- ◆ 电机+减速机一体，可正、反转，内置限位及过载保护开关；
- ◆ 结构紧凑、重量轻、免维护、无噪音；
- ◆ 卷放薄膜、遮阳网、遮阳布等柔软材料；
- ◆ 用于温室、畜禽舍、建筑物的遮阳、隔断、开窗通风等。

## 安装使用说明

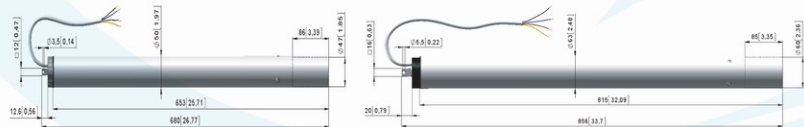
- ◆ 工作过程中，管式电机温度可能达60℃，切勿碰触；
- ◆ 本产品符合EN60529中IP44级；
- ◆ 本产品不适用于连续工作的工况，每次运转最长4分钟；
- ◆ 本产品工作时环境温度范围为5℃-63℃。

### 主要性能参数

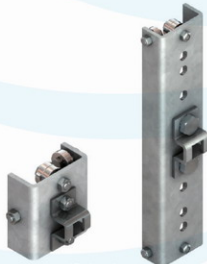
- ◆ 内置防水、精密限位装置，最大可调23圈；
- ◆ 带50×1.5/63×1.5毫米铝合金管，便于连接50/63毫米卷轴；
- ◆ 方形轴头，配合专用开口销，便于固定到滑动小车。

Type	T	n 50h kw	I 50H A	U 50HZ V	KB 50HZ min		IP
RMA20.0512	50	0.345	1.5	230	4	1	44
RMA20.0512	120	0.435	1.9	230	4	1	44

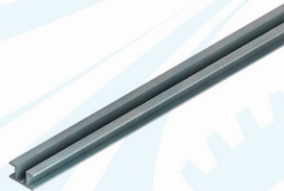
### 德国LOCK管式电机安装尺寸图



德国LOCK管式电机零配件



滑动小车



### 铝合金轨道



Irrigation system,  
Ebb/flood irrigation system





#### Water tank

galvanized steel +liner;

#### Compared with the concrete pool:

- low cost, long life;
- construction fast, no leakage, maintenance-free;
- Can be disassembled and relocated;
- Complete specifications.





## XIB 鑫天碧® Irrigation system, Ebb/flood irrigation system

### Nursery bed

Nursery bed stand used hot galvanized steel pipes, the frame made of aluminium alloy;  
The steel mesh is coating, anti-corrosion treatment;  
The height can be adjust, with anti-turn device.



Aluminum frame of Nursery bed



Nursery bed wheel

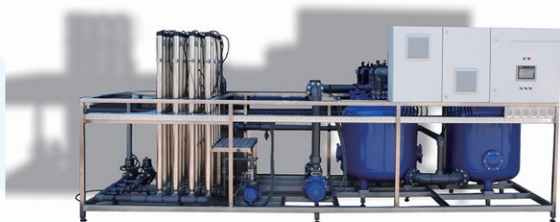


### Ebb/flood tray

1. Ebb/flood irrigation is a good solution to the contradiction between irrigation and oxygen supply, is a highly efficient agricultural technology;
2. Plant growth faster, completely closed system cycle, can reach 90% utilization;
3. Relative humidity easy to control, reduce the breeding of fungi;
4. Water efficient, the management cost is reduced, can be used at any time, from the variety, specifications, time limit;
5. Ebb/flow irrigation production to achieve standardization, each plant a high degree of unity, quality assurance.

Specification: 4435\*1690\*70mm





## UV disinfection unit

Capacity:	13m³/h
Number of reactors	8 pieces
UV – light source:	400W
Length of reactor :	1700mm
UV lamp life (normal use):	12000 h
Required UV dose:	80mJ / cm²

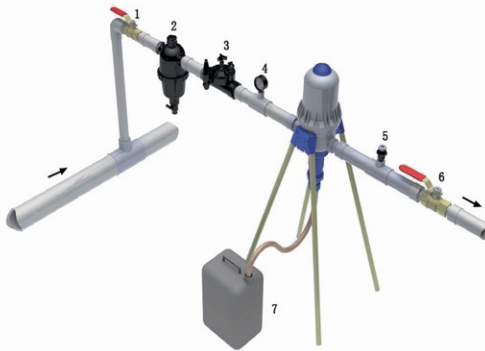
## The system consists of the following elements:

1. Stainless steel frame;
2. Acid control system for cleaning the quartz tube;
3. Sand filters;
4. PLC with touch screen for controlling and monitoring the system;
5. System pump;
6. 2 pcs UV sensors;
7. Paddle wheel with flow control.

Note: The suction line from the infected drain tank to the disinfection has to be connected from underneath the drain tank. If the suction line from the tank is mounted over the top edge of the tank we need to apply a special filling pump which will bring additional costs. The acid used to clean the system may not have a higher concentration than 38%.

## XIB 鑫天碧® Irrigation system, Ebb/flood irrigation system

### Venturi fertilizers



1. Accurate mixing of water and medicine;
2. Measurement adjustment is quick and easy;
3. Maintenance is simple, low cost;
4. Key internal parts are made of the highest quality materials. (Hastelloy spring, fluorine rubber seal)

#### Technical Parameters:

1. Pressure: 0.2-8kg (for irrigation product pressure: 0.2-5kg)
2. Flow: 7-2500L / h;
3. Operating temperature: 4-40 degrees Celsius;
4. Interface size: 3/4 "

### Irrigation unit

#### Function & application

Automatically and accurately control the mixing ratio of liquid fertilizers and water based on pH and EC values.

#### Advantages:

1. Proved technology and design;
2. High quality parts;
3. Control system frame;
4. Stainless steel frame;
5. High quality magnetic pump from dosing;
6. Flow rate: 30m<sup>3</sup>/h, or customized;
7. Pressure: 2.5-3.0kg, or customized.

#### You can customize your irrigation unit:

1. Source of water (running water or tank water);
2. Output flow rate of water;
3. Output pressure of water;
4. Fertilizer channel qty.



Boom machine



1. three fast-speed nozzle, gently rotating the nozzle can be achieved to change the water;
2. running speed stepless adjustable;
3. can be automatically stop;
4. save the land, hanging installation method to maximize the savings of valuable acreage.

Stroke	Speed	Power	boom rod length	Weight	Diameter
65m	1.5-2.1m/min	180w	According span length	75kg	900*850*385



Horticulture equipment





播种机



专业生产自动播种线，装盆机，移栽机，贴标机，码垛机，催芽室等设备：  
意大利设计制造，品质卓越：  
高性价比，高可靠性：  
产品型号齐全，精确满足客户需求同时可以节约成本  
速度：100-650盘/小时  
功率：7.5kw，400V 3相  
规格：7093\*2344\*2251 mm



操作可提前设置、自动运行，可以设置所需播种数量，设置每孔预播种粒数，完成播种工作机器自动停止。  
更快捷、更简便的更换播种滚筒，您可以在10几秒内更换滚筒

上盆机



特殊的设计可以使穴盘或花盆填充的更均匀一致，  
每一盘、每一孔都很均匀。  
速度：最大可调至2400 盘/小时  
功率：7.5kw，3相 400V  
适用于圆形和方形花盆：8-22cm

移栽机



连续移栽，最多可使用36根移栽头，最大工作宽度  
至2100毫米。

基质搅拌机



特点:

1. 几分钟内可以完成基质混合, 减少工作时间和成本;
2. 不锈钢高阻力螺旋转子, 减少磨损;
3. 可以手动和自动加水, 自动送料;
4. 可配置移动轮, 方便转移;
5. 料斗容量: 1150L 2100L



Mixing valves





## Mixing valves

1. Effective reduction of greenhouse heating energy consumption (with greenhouse automatic control);
2. Made in Germany, excellent quality;
3. High reliability, long life;
4. Three links, four-way series, complete specifications.



Item	DN20	DN25	DN32	DN40	DN50	DN65	DN80	DN100	DN125	DN150	DN200
Three way valves	<input checked="" type="checkbox"/>	<input checked="" type="checkbox"/>	<input checked="" type="checkbox"/>	<input checked="" type="checkbox"/>	<input checked="" type="checkbox"/>	<input checked="" type="checkbox"/>	<input checked="" type="checkbox"/>	<input checked="" type="checkbox"/>	<input checked="" type="checkbox"/>	<input checked="" type="checkbox"/>	<input checked="" type="checkbox"/>
Four way valves	<input type="checkbox"/>	<input checked="" type="checkbox"/>	<input checked="" type="checkbox"/>	<input checked="" type="checkbox"/>	<input checked="" type="checkbox"/>	<input checked="" type="checkbox"/>	<input checked="" type="checkbox"/>	<input checked="" type="checkbox"/>	<input checked="" type="checkbox"/>	<input checked="" type="checkbox"/>	<input checked="" type="checkbox"/>



Rotary motor  
(24V&220V )





Hydroponics cultivation





## XIB 鑫天碧® Hydroponics cultivation

### Cultivation gutter

The new three-dimensional cultivation gutter, which is mainly used for vegetable and fruit planting, is an environmentally cultivation equipment. Cultivation gutter is not easy to matrix nutrient loss, so as to effectively ensure the healthy growth of plants, because the cultivation of the use of the cocopeat, can not be limited by soil conditions, Regardless of the soil fertile or not, even in the slopes, wasteland or cement can be planted on the ground.

#### Advantages of the cultivation gutter:

1. Cultivation gutter is conducive to improving the utilization of light energy;
2. Cultivation gutter can improve land use efficiency and increase the multiple cropping index.
3. conducive to improving the planting density;
4. Cultivation gutter is conducive to play "edge advantage";
5. Customize the product according to the requirements of the plant.



### Hydroponics

- Perfect fusion of modern greenhouse engineering technology, facilities cultivation techniques and landscape art.
- Expand the use of greenhouse functions, enhance the greenhouse economic benefits.



Pipeline cultivation



leafy vegetable cultivation



Floating cultivation



Pipeline cultivation



Column cultivation



Wall cultivation



Vegetable tree



Coco peat cultivation



Pumpkin cultivation



Gutter cultivation



Strawberry cultivation



Pot cultivation

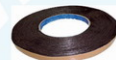
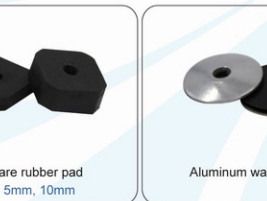
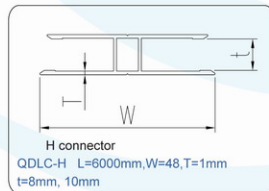
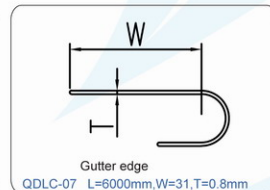
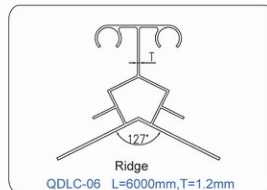
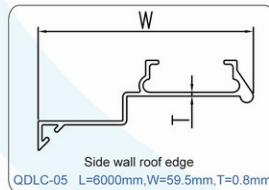
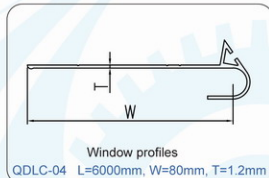
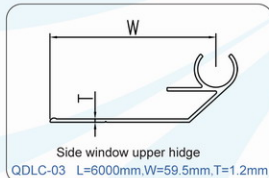
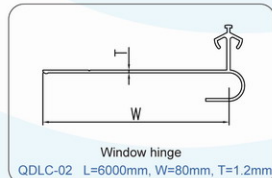
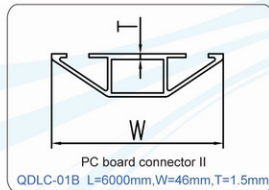
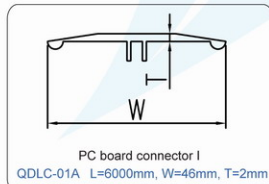
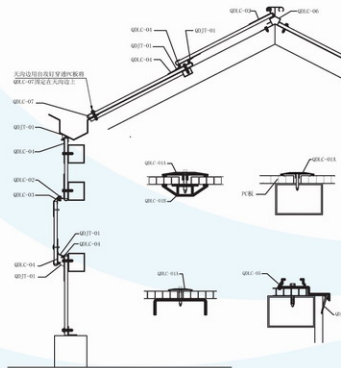


Greenhouse  
profiles & materials



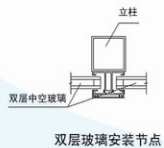
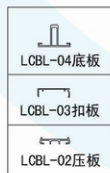
# XIB 鑫天碧® Greenhouse profiles & materials

## PC board greenhouse profiles

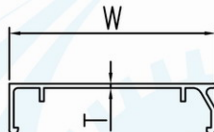
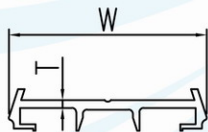
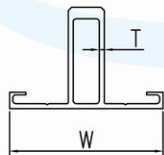
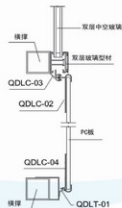


## Hollow glass greenhouse profiles

## Hollow glass Profiles installation



## Installation of side window profiles



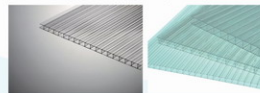
## Aluminum profiles of single layer glass greenhouse



类	1	2	3	4	5
型材	铝型材	铝型材	铝型材	铝型材	铝型材
天窗上扣	天窗上扣	天窗上扣	天窗上扣	天窗上扣	天窗上扣
天窗下扣	天窗下扣	天窗下扣	天窗下扣	天窗下扣	天窗下扣
天窗密封条	天窗密封条	天窗密封条	天窗密封条	天窗密封条	天窗密封条
天窗压板	天窗压板	天窗压板	天窗压板	天窗压板	天窗压板
天窗固定件	天窗固定件	天窗固定件	天窗固定件	天窗固定件	天窗固定件
天窗密封胶条	天窗密封胶条	天窗密封胶条	天窗密封胶条	天窗密封胶条	天窗密封胶条
天窗排水槽	天窗排水槽	天窗排水槽	天窗排水槽	天窗排水槽	天窗排水槽
天窗密封胶条	天窗密封胶条	天窗密封胶条	天窗密封胶条	天窗密封胶条	天窗密封胶条
天窗密封胶条	天窗密封胶条	天窗密封胶条	天窗密封胶条	天窗密封胶条	天窗密封胶条
天窗密封胶条	天窗密封胶条	天窗密封胶条	天窗密封胶条	天窗密封胶条	天窗密封胶条

## Polycarbonate Anti-drip sheet.

Anti-drip sheets are suitable for use in roofs where dripping is not allowed, especially in agricultural greenhouses where dripping of causes damage to crops. The innovative product inner surface has an anti-UV co-extruded layer. The inner surface is made of hydrophilic coating. This hydrophilic coating can increase the surface tension of the sheet, reducing the contact between the water and the sheet, thus inhibiting the formation of condensate, the surface of the sheet only to form a layer of thin water mist, neither dripping nor affected the translucency of the sheet, helps to prevent the dripping of the condensate from causing crop and property damage.



8mm, 10mm 12mm 16mm

## Advantage:

1. Light weight, easy to process and install;
2. High impact strength;
3. High transmittance;
4. Anti aging and anti-UV;
5. High thermal insulation;
6. anti-drip effect is good;
7. 10 years warranty



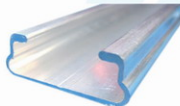
**XIB 鑫天碧®** Film greenhouse materials



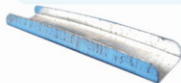
Film spring  
L=2000mm



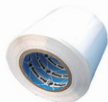
G.I. profile  
T=0.7mm, 0.65mm, L=4m, 6m



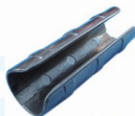
Aluminum profile  
T=1mm, L=4m, 6m



Profile connector  
Galvanized steel



Film tape  
7cm×15m



Film hoop  
Ø22mm Ø25mm Ø32 mm



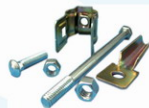
Manual roll up  
H=2m L=100m



Manual roll up(chain)  
H=2m L=100m



Electrical roll up  
DC24V 40W 50Nm DC24V 100W 100Nm



Hinge connector



Fitting of telescopic link



Rolling tube connector



Climber



Power supplier (single)



Power supplier(multi )

# XIB鑫天碧® Film greenhouse materials



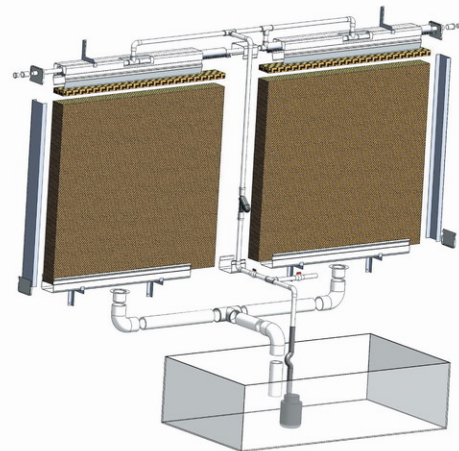
Inflation blower  
AC220V 50Hz 12w



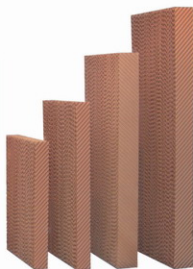
1. Seal;
2. Rain cover;
3. Assembly plate;
4. Aluminium foil pipe;
5. PE flange.



# XIB鑫天碧® Cooling pad system



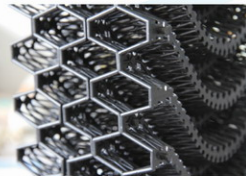
## XIB 鑫天碧® Cooling pad system



Cooling pad  
1200×600×100mm 1500×600×100mm 1800×600×100mm

### Features:

1. Cooling pad for the honeycomb structure material, absorbent ability; high water resistance, anti-mildew, long service life;
2. Large evaporation area, natural water absorption, diffusion is fast, lasting performance, cooling effect of 80%;
3. Cooling pad without cosurfactants, harmless to the human body safe and environmental protection.



Plastice cooling pad

1200×600×150mm  
1500×600×150mm  
1800×600×150mm

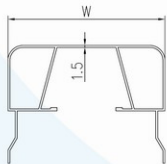


Exhaust fans

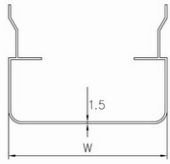
### Product characteristic:

1. Advance balance open and shutting structure;
2. Low noise, large wind capacity;
3. Automatic cleaning when blade is running;
4. High quality motor.

Product code	Type	Blade diameter	Motor speed	Wind capacity	Press	Noise	Power	Voltage	Size
F21050000	DJF-500	500mm	960rpm	10000m <sup>3</sup> /h	50Pa	< 70dB	0.55KW	380V	610×610×360mm
F21070000	DJF-700	700mm	960rpm	14800m <sup>3</sup> /h	50Pa	< 70dB	0.75KW	380V	820×820×400mm
F11076001	QCHS-760	760mm	1400rpm	16000m <sup>3</sup> /h	56Pa	< 70dB	0.55KW	380V	900×900×400mm
F11090001	QCHS-900	900mm	1400rpm	30000m <sup>3</sup> /h	56Pa	< 70dB	0.75KW	380V	1000×1000×400mm
F11000000	QCHS-1000	1000mm	1400rpm	35000m <sup>3</sup> /h	50Pa	< 70dB	0.75KW	380V	1100×1100×400mm
F11100000	QCHS-1100	1100mm	1400rpm	40000m <sup>3</sup> /h	50Pa	< 70dB	1.1KW	380V	1220×1220×400mm
F11125001	QCHS-1250	1250mm	1400rpm	44000m <sup>3</sup> /h	50Pa	< 70dB	1.1KW	380V	1380×1380×400mm
F11140001	QCHS-1400	1400mm	1400rpm	55800m <sup>3</sup> /h	50Pa	< 70dB	1.5KW	380V	1540×1540×400mm



Pad cover frame



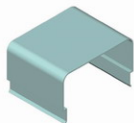
Pad bottom frame  
L=6m, w=150mm



Side guard frame  
H= 1.56m L= 1.56mm 1.86m



Tube support



Frame connector  
L=100mm, W=100mm



Guard board  
L=6m, W=60mm



Frame clamp



Circulation fans  
220V 145W 1400rpm D=400mm  
220V 350W 1400rpm D=500mm



End cap



Water collection



Filter  
Ø32mm



Water exit  
Ø75mm



Valve  
Ø25mm Ø32mm





## Light system >>

High voltage sodium lamp



Function: supplement the amount of light for plant growth, thereby control the growth of plant.

Item	Technical data						
	Power	Current	Initial current	Life	Color	lamp holder	Length
GE sodium lamp	400W	4.5A	56500Lm	32000h	2100K	E40	283mm
	600W	6.0A	90000Lm	32000h	2100K	E40	283mm
	750W	7.0A	112000Lm	28500h	2100K	E40	291mm
	1000W	8.0A	140000Lm	25000h	2100K	E40	315mm
Phillip sodium lamp	Power	Current	Initial current	Life	Color	lamp holder	Length
	400W	4.5A	56500Lm	32000h	2100K	E40	283mm
	600W	6.0A	90000Lm	32000h	2100K	E40	283mm
	750W	7.0A	112000Lm	28500h	2100K	E40	291mm
	1000W	8.0A	140000Lm	25000h	2100K	E40	315mm
Rectifier	Specification	Input voltage	Input power	Input current	Power factor	Total harmonic distortion	Current crest
	750W	400V	790W	1.98A	>0.98	<10%	<1.7
	600W	230V	638W	2.08A	>0.98	<10%	<1.7
	600W	400V	635W	1.6A	>0.98	<10%	<1.7
	1000W	400V	1050W	2.63A	>0.98	<10%	<1.7

## LED lights



## Specification of LED light

- Rich light wavelength, coincides with plant light synthesis and spectral range of light form;
- Can be combined light to obtain pure monochromatic light and composite spectrum in accordance with the need;
- Can focus on a specific wavelength of light, balanced irradiation of crops;
- Regulate crop flowering and fruition, also control plant height and plant nutrients;
- Less heat, occupies less space, can be used for multi-layer cultivation system, to achieve a low thermal load and production space miniaturization;
- Light efficiency: 90% light can be absorbed by plants;
- Light failure is very small, long service life;
- Stronger durability, also reduces operating costs.



Power	Voltage	Current	Frequency	Luminous efficiency	Illuminance area	Suspension Height	Working life-span	IP Grade	Beam angle
36w	AC86-265V	0.21-5A	50/60Hz	44.6LM/W	2.5-4m <sup>2</sup>	1-1.5m	> 50,000H	IP44	120°

## Plant growth lights



## Features:

- Effectively promote plant photosynthesis, shorten the growth cycle;
- Can be planted by the requirements of a specific wavelength of light, uniform irradiation of crops;
- Not only can adjust the crop flowering and fruition, and can reduce the deformity rate;
- Light fades small, long life;
- Easy to install;

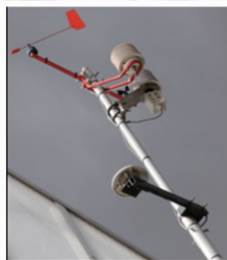
name	Voltage	Power	height	Light distance
PGL40	AC 220V	40w	1m---2.5m	3m---4m
PGL80	AC 220V	80w	1m---2.5m	3m---4m

## XIB 鑫天碧® Greenhouse control system

Hoogendoorn

Characteristics:

1. Based on CANopen protocol;
2. Integration of climate, irrigation, and energy management, a comprehensive greenhouse operations;
3. Extremely flexible system configuration to meet customer needs, cost savings;
4. People-oriented, easy to learn and easy to use;
5. Convenient online training and technical support;
6. Multi-language "help" menu;
7. Can be freely customized.



Hotraco system

Features:

1. Made in the Netherlands, reliable;
2. Small size, light weight, easy to install;
3. Graphic interface intuitive, easy to understand;
4. sensor + weather station + control box;
5. Cost-effective.

A system can control:

- >> 2 sets of windowing system
- >> 2 sets of screening system
- >> Circulation fan
- >> Hot air blower
- >> 3 sets of mixing valves
- >> Light system
- >> Cooling pad system

